

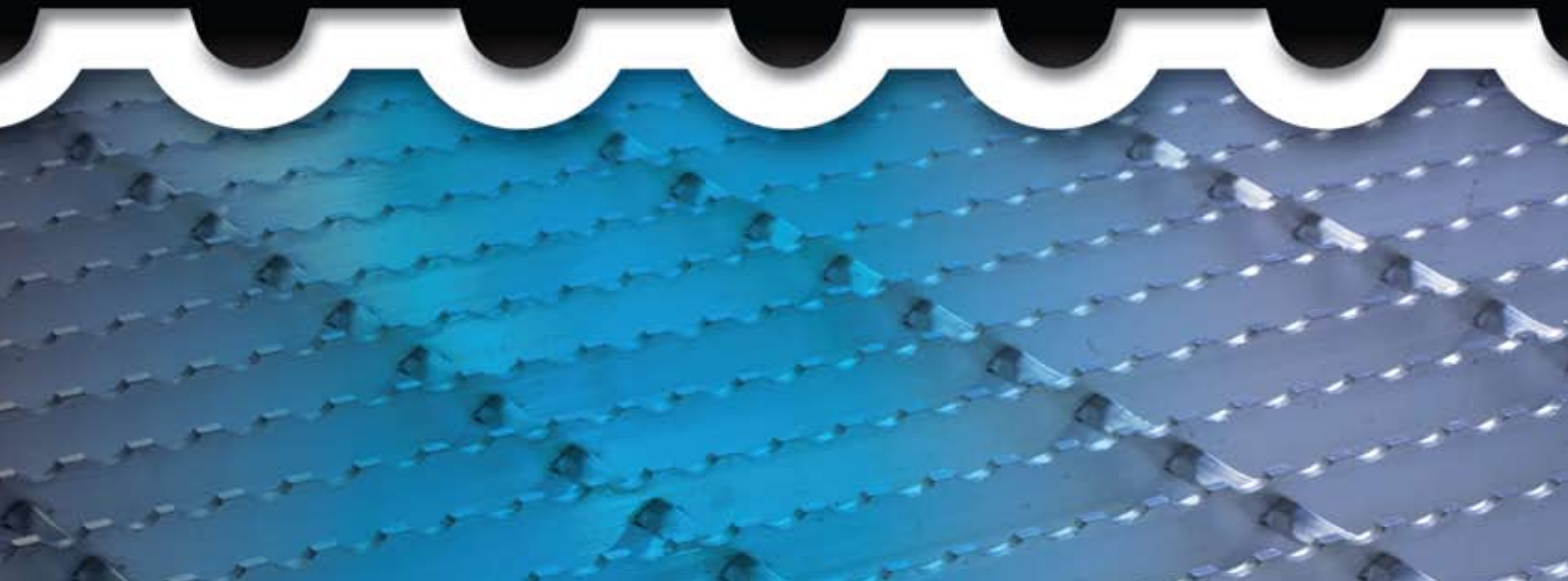
Standard Safety Access Products

Crossovers
Servicing Platforms
Ladders
Handrails
Work Stands
Grating Products
ETO - Engineered To Order



Bustin

SAFETY EVERY STEP OF THE WAY...SINCE 1928



welcome

Since 1928, Bustin Industrial Products has pioneered safety access equipment for companies such as Lockheed Martin®, Mack Truck®, SYSCO Foodservice® and NASA's Kennedy Space Center, to name just a few.

Bustin customers are secure in the knowledge that our combined experience, engineering expertise and good manufacturing practices (GMP) produce the finest products and highest levels of customer satisfaction.

Our welders are certified to American Welding Society standards, all products are proudly manufactured in the USA and we are proud to display the ISO 9001:2000 certificate of excellence for product and internal management quality. Bustin operates under strict quality controls, adhering to ANSI and OSHA standards for engineered safety in every step of the manufacturing process.

Although the company has grown well beyond the original vision of its founder, Leo Bustin, his legacy of integrity, performance and quality has endured. His original place of business, a small shop in New York City, was where he designed and developed over 20 patents. Today, these patents are still in use, promoting superior safety in many industrial workplaces.



With Leo Bustin's passing in 1985, the company changed hands and was purchased by a well-known OSHA attorney in an effort to continue promoting safety and ergonomics as a necessity within progressive organizations. Mark Lichty and his hand-picked management team spent two decades working to expand product offerings and prepare the firm for continued growth well into the 21st century.

In early 2005 Michael B. Williams, President of M W Supply, a highly regarded access equipment manufacturer and cargo control management company, recognized the value of the proprietary advantages and superior quality associated with the Bustin name. In the Spring of that year, he purchased the company and implemented a strong sales and service initiative designed to generate planned, and managed growth.

In 2007, the Bustin name was adopted by the Texas facility, giving the company an additional distribution location. Expanding coverage in Pennsylvania, where Bustin's corporate headquarters are located, Bustin Industrial Products has emerged as a market leader in the manufacture of innovative, cost-effective, personnel safety and cargo control products. We are resolute in our focus on providing superior tools to discerning professionals who demand the best possible performance at a fair price.

Questions regarding the performance or application of our products may be directed to our Engineering or Sales Departments at (800) 933-5166. To see interactive videos on a variety of Bustin products at work, visit us online at www.bustin-usa.com. We encourage you to review this catalog in its entirety. To discuss custom-engineered solutions to your specific needs, please contact our Sales Department.

**Bustin**
SAFETY EVERY STEP OF THE WAY... SINCE 1928

Quality Policy

Bustin Industrial Products is committed to providing safe and high quality products and services that meet the expectations and quality requirements of our customers. Top management has worked to define and document this policy for quality, including the objective for and commitment to, quality in all aspects of the business. It is reviewed and discussed during Management Review Meetings for continued suitability and effectiveness. We strive to produce the highest quality product by utilizing our greatest resource, our people, who are responsible and accountable for their work. We are committed to continually improving our products and processes with the use of corrective and preventative actions. Bustin Industrial Products maintains a working environment that encourages continuous quality improvement in all areas of its operations.

"We at Bustin Industrial Products are individually and collectively committed to continuous quality improvement For Our Customer's Ultimate Satisfaction."

Statement of Company Safety Policy and Mission of Safety Program

Bustin Industrial Products is committed not only to supplying our customers with a safe, and quality product, but also providing a safe, and quality work environment in which our coworkers can manufacture products.

Bustin Industrial Products trains and requires all coworkers to comply with the company's on-going safety philosophy. Coworkers are expected to assume responsibility for the safety of their own work performance as well as the encouragement of their coworkers to work safely. Each co-worker must comply with the Occupational Safety and Health Act standards and rules.

The mission of the Safety Program at Bustin Industrial Products is to provide a safe working environment for everyone through education, attention and practice. Our ultimate goal? The elimination of all accidents involving coworkers and/or property.

Our Corporate Mission: To be recognized as the authority in innovative, cost-effective personnel safety and cargo control products by providing problem solving solutions to professionals who demand superior performance at a fair price.

Environmental Policy

Bustin Industrial Products is dedicated to protecting and preserving the environment for our coworkers, our community and generations yet to come. While we understand that we must operate in a fiscally responsible fashion, we are committed to working within established boundaries that ensure the planning and execution of environmentally-friendly policies and actions.



Table of CONTENTS

STANDARD CROSSOVER DESIGN
PAGE 4

SPACESAVER CROSSOVER DESIGN
PAGE 4

SERVICING PLATFORMS
PAGE 5

MOBILE SERVICING PLATFORM
PAGE 5

DOCK LADDERS
PAGE 6

STRAIGHT LADDERS
PAGE 6

HANDRAILS
PAGE 7

SAFETY STEP BARS
PAGE 7

FLIP UP STEP
PAGE 8

WASTE CONTAINER DRUM COVER
PAGE 8

ALUMINUM GRATING
PAGE 9

FIRM-GRIP STEEL GRATING
PAGE 10

ALUMINUM STAIR TREADS
PAGE 11

STEEL STAIR TREADS
PAGE 11

FIBERGLASS GRATING
PAGE 12

STEEL ELECTRO-FORGED GRATING
PAGE 12

**SELECTING BUSTIN
INDUSTRIAL PRODUCTS**
PAGE 14-16

Clear Span 24", 24" Wide					
Part #	Platform Height	Clear Height	Steps per Side	Approx. Weight	Base Length
STEEL					
BB3001	32"	31"	3	290	78"
BB3002	40"	39"	4	330	91"
BB3003	48"	47"	5	372	104"
BB3004	56"	55"	6	406	118"
BB3038	64"	63"	7	445	131"
ALUMINUM					
BE3001	32"	31"	3	110	78"
BE3002	40"	39"	4	125	91"
BE3003	48"	47"	5	140	104"
BE3004	56"	55"	6	156	118"
BE3038	64"	63"	7	171	131"

Clear Span 36", 24" Wide					
Part #	Platform Height	Clear Height	Steps per Side	Approx. Weight	Base Length
STEEL					
BB3005	32"	31"	3	325	90"
BB3006	40"	39"	4	365	103"
BB3007	48"	47"	5	405	116"
BB3008	56"	55"	6	440	130"
BB3037	64"	63"	7	456	143"
ALUMINUM					
BE3005	32"	31"	3	130	90"
BE3006	40"	39"	4	145	103"
BE3007	48"	47"	5	155	116"
BE3008	56"	55"	6	168	130"
BE3037	64"	63"	7	181	143"

* For Diamond Plate just add a D after the number (i.e. BE3001D)



Standard & Spacesaver Crossover Design FEATURES:

- Meets or exceeds OSHA standards
- Available in Aluminum, Steel & Stainless Steel
- Capacity 500 lbs.
- Ships knocked-down to reduce freight cost
- Handrail 42" high
- Top plate 5" high
- Standard stair angle 50"; Spacesaver 70"
- Slip resistant, self cleaning, bar-grating treads & platform
- Available in diamond plate (will increase weight)

Clear Span 24", 24" Wide					
Part #	Platform Height	Clear Height	Steps per Side	Approx. Weight	Base Length
STEEL					
BB3101	32"	31"	3	250	53"
BB3102	40"	39"	4	312	59"
BB3103	48"	47"	5	352	65"
BB3104	56"	55"	6	364	70"
ALUMINUM					
BE3101	32"	31"	3	104	53"
BE3102	40"	39"	4	115	59"
BE3103	48"	47"	5	125	65"
BE3104	56"	55"	6	154	71"

Clear Span 36", 24" Wide					
Part #	Platform Height	Clear Height	Steps per Side	Approx. Weight	Base Length
STEEL					
BB3105	32"	31"	3	280	65"
BB3106	40"	39"	4	332	71"
BB3107	48"	47"	5	382	77"
BB3108	56"	55"	6	396	83"
ALUMINUM					
BE3105	32"	31"	3	132	65"
BE3106	40"	39"	4	142	71"
BE3107	48"	47"	5	152	77"
BE3108	56"	55"	6	168	83"

* For Diamond Plate just add a D after the number (i.e. BE3001D)



Servicing Platforms

Built to Service You

Bustin's lightweight servicing platforms provides the perfect access solution to improve productivity and safety. The aluminum construction will not rust and is ideal for wet environments. The serrated safety grating provides a superior slip-resistant surface. The steel workstand is perfect for those heavy duty applications where extra durability is needed. 500 lbs. maximum capacity.

Part #	Model	# of Steps	Base Width	Base Depth	Height	Approx. Weight
Shipped Assembled (All Welded)						
DE0106	Aluminum 224	1	30.5"	16"	10"	9 lbs
DE0102	Aluminum 225XLT	2	22"	22"	20"	14 lbs
DE0105	Aluminum 226XLT	3	31"	32"	30"	26 lbs
DB0107	Steel 224	1	31"	16"	10"	20 lbs
DB0102	Steel 225XLT	2	22.5"	23"	20"	30 lbs
DB0103	Steel 226XLT w/ wheels	2	22.5"	22"	20"	34 lbs
Shipped Unassembled						
DE0101	Aluminum 225	2	23"	23"	20"	16 lbs
DE0103	Aluminum 226	3	31"	33"	30"	32 lbs
DE0104	Aluminum 226S	3	25"	33"	30"	38 lbs
DB0101	Steel 225	2	23"	23"	20"	31 lbs
DB0104	Steel 226	3	31"	33"	30"	56 lbs
DB0105	Steel 226S	3	25"	33"	30"	52 lbs

Mobile Servicing Platforms

The lightweight aluminum mobile servicing platform provides a safe access to elevated areas. The serrated grating on the stairs and landing provide a superior self cleaning, slip-resistant surface. The spring loaded swivel casters provide maximum mobility. 500 lbs maximum capacity.

Part #	Approx. Weight	Overall Length	Platform Length
MSPA-101	38 lbs	48 1/4"	24 1/2"
MSPA-102	50 lbs	62 1/2"	39 15/16"



The serrated grating on the stairs and landing provide a superior self cleaning, slip-resistant surface.

Dock Ladders

Safety Every Step Of The Way

- Can be installed at dock and loading areas or off-the-floor levels in a plant or shop
- Safe and easy climbing with 2" deep X 18" wide treads
- Handrail extends 42" above dock
- Offset 7" for ample toe clearance, cross braced for extra stability
- Complete with deck foot flange anchor pads for permanent installation
- Mounting holes are 9/16" dia.
- Meets OSHA Standards*
- Available in Aluminum or Steel
- Steel is prime gray finish

All Bustin ladders are built with our renowned Safety Step Bars. Our ladders can be used in warehouses, for roof access, and on the outside of water tanks.

Part #	Min Height To Doc	# of Steps	Weight
STEEL			
BB1101	30-9/16"	3	26 lbs
BB1102	42-9/16"	4	30 lbs
BB1103	54-9/16"	5	34 lbs
BB1104	66-9/16"	6	38 lbs
BB1105	78-9/16"	7	42 lbs
BB1106	90-9/16"	8	46 lbs
BB1107	102-9/16"	9	50 lbs
BB1108	114-9/16"	10	54 lbs
ALUMINUM			
BE1101	30-9/16"	3	65 lbs
BE1102	42-9/16"	4	75 lbs
BE1103	54-9/16"	5	85 lbs
BE1104	66-9/16"	6	95 lbs
BE1105	78-9/16"	7	105 lbs
BE1106	90-9/16"	8	115 lbs
BE1107	102-9/16"	9	125 lbs
BE1108	114-9/16"	10	135 lbs



Straight Ladders

Safety Every Step Of The Way

Part #		Length	Step-Off Height	Approx. Weight		
Ladders (No Extensions)						
Steel	Stainless	Aluminum			Aluminum	Steel/Stainless
BB0801	BJ0801	BE0801	8'	7' 9"	34 lbs	60 lbs
BB0802	BJ0802	BE0802	10'	9' 9"	44 lbs	68 lbs
BB0803	BJ0803	BE0803	12'	11' 9"	54 lbs	80 lbs
BB0804	BJ0804	BE0804	14'	13' 9"	64 lbs	98 lbs
BB0805	BJ0805	BE0805	16'	15' 9"	74 lbs	121 lbs
Ladders with Extensions						
BB0806	BJ0806	BE0806	8'	11'3"	43 lbs	82 lbs
BB0807	BJ0807	BE0807	10'	13'3"	53 lbs	100 lbs
BB0808	BJ0808	BE0808	12'	15'3"	63 lbs	110 lbs
BB0809	BJ0809	BE0809	14'	17'3"	73 lbs	120 lbs
BB0810	BJ0810	BE0810	16'	19'3"	83 lbs	143 lbs

*Bustin standard ladders meet OSHA Standards as we interpret them.



Handrails

Protection and Safety



Length	Part Numbers		Center Post
	Toe Plate	No Toeplate	
24"	HTA101	HRA101	No
36"	HTA102	HRA102	No
48"	HTA103	HRA103	No
60"	HTA104	HRA104	No
72"	HTA105	HRA105	Yes
84"	HTA106	HRA106	Yes
96"	HTA107	HRA107	Yes

- Provides protection to increase safety
- Aluminum construction does not rust and is virtually maintenance free.
- Light and easy to install
- 9/16" mounting holes in foot pads
- Available with or without toe plate
- Handrail is 1 1/2" Sch 40 pipe
- Installation available upon request
- OSHA Compliant
- Quick Installation

Safety Step Bars

Safety Every Step of the Way

- Ideal for ladder rungs. Available in aluminum, steel, and stainless steel.
- Part numbers below represent 20' long pieces
- Can be cut to size.

For more information please call.

Aluminum

Part #	Model	Width	Height	Thickness
DE0604	627	2"	1-1/2"	3/16"
DE0605	628	2-3/4"	1-1/2"	3/16"
DE0606	630	3-5/8"	1-1/2"	3/16"

Steel

Part #	Model	Width	Height	Thickness
HA0601	624	1-1/16"	1-1/4"	1/8"
HA0602	627	1-7/8"	1-1/4"	1/8"
HA0603	628	2-5/8"	1-1/4"	1/8"
HA0604	630	3-1/2"	1-1/4"	1/8"

Stainless Steel*

Part #	Model	Width	Height	Thickness
HJ0601	624	1-1/16"	1-1/4"	1/8"
HJ0602	627	1-7/8"	1-1/4"	1/8"
HJ0603	628	2-5/8"	1-1/4"	1/8"
HJ0604	630	3-1/2"	1-1/4"	1/8"

* Maximum length available is 12'



Flip-Up Step

Space-Saving Product

- Sturdy steel construction
- Tread is 9”D x 14”W x 1 1/2”H
- 7/16” dia. mounting holes pre-drilled for ease of installation
- Self-cleaning for maximum safety
- DB0301A uses Steel Electro-Forge grating



Part #	Description	Weight
DB0301	Prime Gray	9 lbs
DB0301A	Prime Gray	9 lbs

Bustin’s Firm Grip
grating offers multi-directional,
skid-resistant surface

Waste Container Drum Covers

Featuring Heavy Duty Steel Hinges

8



- Sturdy Steel construction
- Heavy duty steel hinges
- Rolled Angle rim prevents slippage
- Formed handle makes for easy access
- Prime Gray finish
- Hinged stop keeps cover from remaining open
- Ideal for waste containers
- Perfect for shop use
- Make use of empty drums

Part #	Inside Dimension	Drum Capacity
DB0501	24”	55 Gallons
DB0502	20”	30 Gallons



Aluminum Grating

The #1 Grating in the Industry

- Bustin Types N and W with 3/16 thick Bearing Bars are available in 48" Panel Widths. We are one of the few companies that can provide this.
- High Strength to Weight ratio
- Corrosion resistant alternative to Carbon Steel
- 80% open area to provide minimal particle accumulation and accommodate vertical laminar air-flow.
- Totally maintenance free
- Non-sparking & non-magnetic
- Excellent choice for:
 - Food / Pharmaceutical Packaging & Preparation areas
 - Water Treatment Plants
 - Tractor-Trailer Safety Access
 - Outdoor applications
 - Frequent wash down areas
- Bustin Button™ design swaging locks each bearing bar in place permanently, eliminating shifting or loosening through years of use.
- Bustin Serrated Top Grating has been tested and meets NFPA 1910 for use in wet and dry conditions on fire apparatus. These codes are more stringent than normal walking surfaces.
- Bustin Type T grating with 1/2" Bearing Bar spacing meets American with Disabilities ACT Guidelines when installed with Bearing Bars perpendicular to direction of travel.
- Swage Lock Design eliminates flush top Cross Bars providing a completely serrated Bearing Bar.



Standard Size Panels			
18"x24"	24"x24"	36"x24"	48"x24"
18"x36"	24"x36"	36"x36"	48"x36"
18"x48"	24"x48"	36"x48"	48"x48"
18"x96"	24"x96"	36"x96"	48"x96"
18"x120"	24"x120"	36"x120"	48"x120"
18"x240"	24"x240"	36"x240"	48"x240"

Aluminum Grating Notes:

- Type N with 1-3/16" Bearing Bar spacing is our most popular and economical style. Other bearing bar and cross bar spacing is available. Visit our web site or call for more details.
- Most popular grating heights:
 - 3/4" (plain top only)
 - 1"
 - 1 1/4"
 - 1 1/2"
- 1-3/4", 2" and 2-1/4" are available with 3/16" thick Bearing Bars. Call for additional heights available
- Additional grating information including widths, bearing bar and cross bar spacing, and safe load tables can be viewed on our website www.bustin-usa.com or call for more information.
- Bustin provides excellent pricing and delivery on Aluminum standard size cut grating with or without banding.

Bustin's Firm Grip Grating picks up where others leave off. Our unique cross bar design provides all our grating with a consistent, level surface. Multi-directional design creates a self-cleaning, slip-resistant surface.

Selection Guide:

Note: Please see our Load Tables for each type at our website www.bustin-usa.com

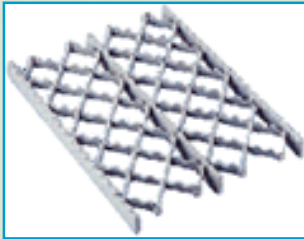
Steel Grating Notes:

- Comes in mill finish. Other finishes available upon request. (primed gray, painted or galvanized)
- Max length available: 240"
- Heights available: 3/4" up to 2 1/4" upon request.
- Thickness available: 1/8", 3/16"
- All stainless steel gratings have plain surface bearing bars.



Type A

For typical industrial applications, e.g. 1" x 3/16", is capable of concentrated loads to 300 lbs. over a 36" span.



Type AL

For lighter duty applications, e.g. 1" x 3/16", is capable of concentrated loads to 170 lbs. over a 36" span.



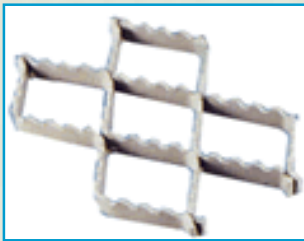
Type B

Greatest load capacity, e.g. 1" x 3/16", is capable of concentrated loads 510 lbs. over a 36" span.



Type BF

Similar to Type B but less load capacity, e.g. 1" x 3/16", is capable of concentrated loads to 342 lbs. over a 36" span. Diamond openings are larger than Type B.



Type P- Protecto. (only available 3/4" x 1/8")

Walking surface only. No bearing bars. Requires structural support by others, call for design support.



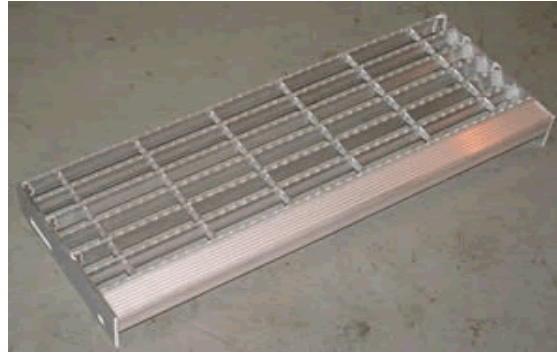
Type M* (only available 1/2" x 1/8")

Floor overlay. Designed to rest directly on another surface, for slippery working conditions that are difficult to solve. Can be banded to make area "mats."

*For more information, please call.

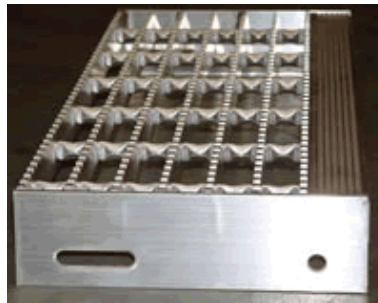
Aluminum Stair Treads

Make Your Next Step a Safe One



Bustin's Aluminum Stair Treads can be manufactured with plain top or serrated for a firm grip. The National Safety Council indicates that many falls are caused by slipping off the edge of steps. Therefore on many of our products,

we supply a non-slip Nosing. Bustin Stair Treads with non-slip Nosing meets OSHA regulation 1910.24(f). Carrier plate hole and slot locations on treads will be compatible with most of the popular standard stringer bolting arrangements. Stair Treads are made with Type N Grating.



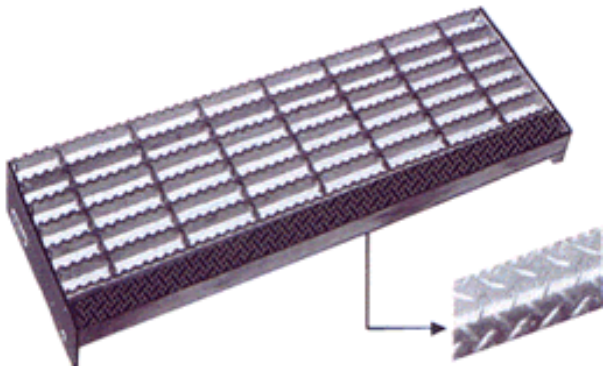
Part #	Bar Size	Tread Size
serrated, without nosing		
CE2301	1-1/4" x 3/16"	7-5/16" x 18"
CE2302	1-1/4" x 3/16"	8-1/2" x 18"
CE2303	1-1/4" x 3/16"	7-5/16" x 24"
CE2304	1-1/4" x 3/16"	8-1/2" x 24"
CE2305	1-1/4" x 3/16"	7-5/16" x 30"
CE2306	1-1/4" x 3/16"	8-1/2" x 30"
serrated, with nosing		
CE2401	1-1/4" x 3/16"	7-5/8" x 18"
CE2402	1-1/4" x 3/16"	8-13/16" x 18"
CE2403	1-1/4" x 3/16"	7-5/8" x 24"
CE2404	1-1/4" x 3/16"	8-13/16" x 24"
CE2405	1-1/4" x 3/16"	7-5/8" x 30"
CE2406	1-1/4" x 3/16"	8-13/16" x 30"
CE2407	1-1/2" x 3/16"	7-5/8" x 36"
CE2408	1-1/2" x 3/16"	8-13/16" x 36"
CE2409	1-1/2" x 3/16"	10" x 36"
CE2410	1-1/4" x 3/16"	10" x 24"
CE2411	1-1/4" x 3/16"	10" x 30"
plain top, with nosing		
CE2701	1-1/4" x 3/16"	7-5/8" x 24"
CE2702	1-1/4" x 3/16"	8-13/16" x 24"
CE2703	1-1/4" x 3/16"	10" x 24"
CE2704	1-1/4" x 3/16"	7-5/8" x 30"
CE2705	1-1/4" x 3/16"	8-13/16" x 30"
CE2706	1-1/4" x 3/16"	10" x 30"
CE2707	1-1/2" x 3/16"	7-5/8" x 36"
CE2708	1-1/2" x 3/16"	8-13/16" x 36"
CE2709	1-1/2" x 3/16"	10" x 36"

Carrier Plate Height

Height	Notes
2-1/2"	For bearing bars up to and including 1-1/4"
3"	For bearing bars 1-1/2" or higher

Steel Stair Treads

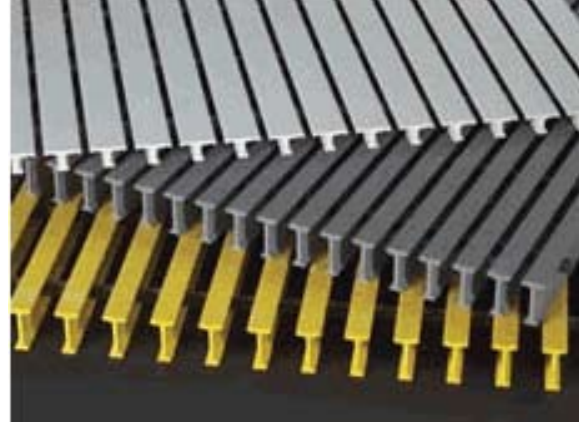
Make Your Next Step a Safe One



- Various Sizes available
- Made with Electro-Forged Grating and diamond plate nosing
- Painted Black Finish

Part #	Length	Width	Type
CM2801	30"	7-5/8"	Serrated
CM2802	30"	10-15/16"	Serrated
CM2901	30"	7-5/8"	Plain top
CM2902	30"	10-15/16"	Plain top

High strength pultruded and molded fiberglass grating are designed to be used as walkways, platforms, and decking in a wide variety of applications. Bustin is an authorized distributor of Strongwell fiberglass grating & structural products.



FEATURES

- Corrosion Resistant
- Structurally Strong
- High Impact & Fatigue Strength
- Lightweight
- Nonconductive
- Resistant to Chipping and Cracking
- Skid Resistant
- Low Maintenance
- Low Thermal Conductivity

PERFECT FOR:

- General Industry Marine
- Plating Operations Transportation
- Chemical & Petroleum Plants Power Plants
- Food and Beverage Operations
- Railroad Fire Equipment.

Steel Electro-Forged Grating

Most Versatile and Economical

- Standard steel grating supplied by Bustin is manufactured with a resistance-weld process using heat and pressure.
- Crossbars are fused to bearing bars to assure maximum strength.
- Steel Electro-forged grating is commonly used for steps, stairways, and walkways. Surface can be plain steel bars or serrated for added safety. Standard finish is painted black, but galvanized, mill finish, or special finishes are available.
- Our most popular style has 4" CTC crossbars and 1 3/16" CTC bearing bars.
- Steel Electro-forged grating is economical and durable and is considered to be the most versatile of the various types of metal gratings.
- This grating is available in grating heights of: 1" x 1/8", 1" x 3/16", 1-1/4" x 1/8" and 1-1/4" x 3/16".
- The standard panel sizes available are 2' x 20', 3' x 20', 2' x 24', and 3' x 24'. Custom sizes available.



**While the competition's
sales pitch is full of holes,
Bustin's Safety Grating is a solid
example of precision engineering
and performance.**

**Experience the difference between punched sheet
metal and true open grate design.**

- Proven Safety since 1928
- Serrated for Maximum Traction
- Self-Cleaning with 80% Open Area
- Machine-Swaged for Long Life
- Non Slip-Leading Edge
- Extruded Strength for Superb Durability
- Burr-Free...no barbs like other gratings
- Meets OSHA, ANSI, and NOMMA Standards

The **5** reasons you will be satisfied by selecting Bustin.

Our customers come to us from all sectors of American business and even for residential safety access needs, large and small. We are proud of our reputation for serving the special needs of the Pharmaceutical, Food & Beverage, Nuclear, Chemical, Aeronautical and Architectural markets.

1 Safety

“Safety in Every Step” is more than a motto at Bustin. Providing more than 80 years of superior industrial work platforms and access products, Bustin is knowledgeable of OSHA, NAAM, ANSI and ADA requirements and assures these requirements are built into every design where necessary. Bustin’s 80% open-area grating forms the walking surface assuring slip resistant traction in all working conditions indoors or out. Bustin is also the only manufacture of 48”wide grating. Rugged construction assures reliable service meeting your load requirements.



14



2 Designed to Meet Your Specifications

Many of our projects get started with nothing more than a phone conversation with our sales and design personnel. Bustin has broad experience in design and fabrication of access platforms to GMP requirements; including selections of materials, weld design, and finishing: Aluminum, Steel, Stainless Steel, Galvanized, Anodized, Epoxy Paint, Polish, Glass Bead finishes are available.

3 Superior Engineering

Our staff engineers work with you until you are satisfied. The Bustin engineering department is capable of a wide range of analysis including FEA, structural, and seismic calculations. Rapid Turn Around CAD drawings supplied with every project. Load testing capabilities available. We do it all!



4 No Installation Problems

Our unique ability to work out a final design from the initial customer inquiry is a capability at the core of our service to you. We ship hundreds of custom designed structures that go right to work on the job without complication or modification. Installation services available.

5 Competitive Pricing and Delivery

We build satisfaction into every project -large or small. We offer competitive prices on every quotation. See our offering of Pre-designed, Pre-engineered platforms at our website.



**Ask your Bustin Representative about our
Truck and Trailer and Cargo Control Solutions.**



Bustin Industrial Products

Phone: 570.424.6500

Toll Free: 800.933.5166

Fax: 570.424-6453

401 Oak Street

East Stroudsburg, PA 18301

www.bustin-usa.com

